

News

**ИЗМЕНЕНИЯ В ДОКУМЕНТАХ,
КОТОРЫЕ ВСТУПАЮТ В СИЛУ
С 01 ЯНВАРЯ 2024**

(MSC. 1/Circ. 1656, 1657, 1658 от 28.11-2022)

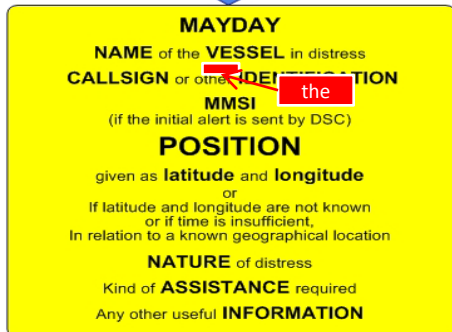
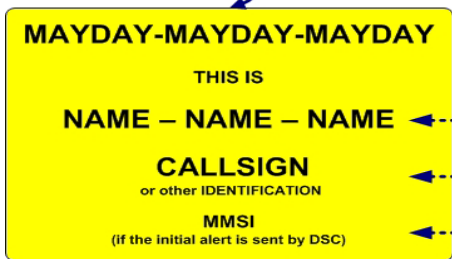
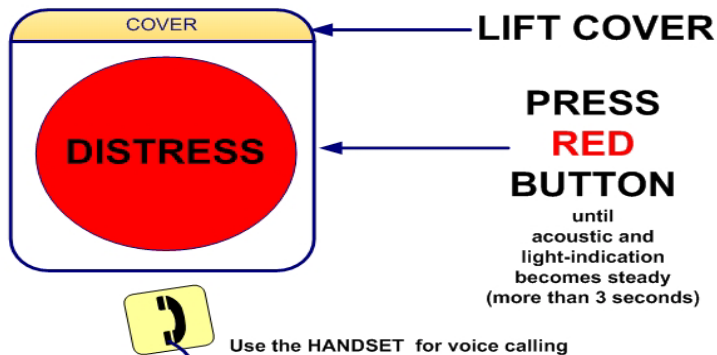


GUIDANCE ON DISTRESS ALERTS

1 The Sub-Committee on Radiocommunications and Search and Rescue (COMSAR), at its thirteenth session (19 to 23 January 2009), finalized the annexed Guidance on distress alerts, describing the operating procedure for a distress alert.

2 Member Governments are invited to bring the annexed guidance to the attention of their shipowners, seafarers and all others concerned.

GUIDANCE ON DISTRESS ALERTS



DISTRESS and COMMUNICATION FREQUENCIES

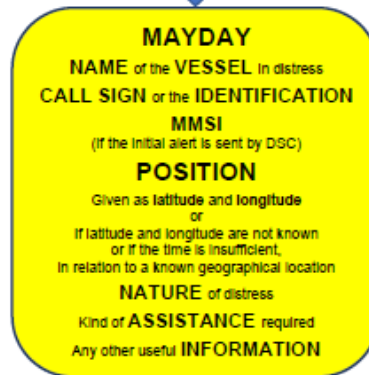
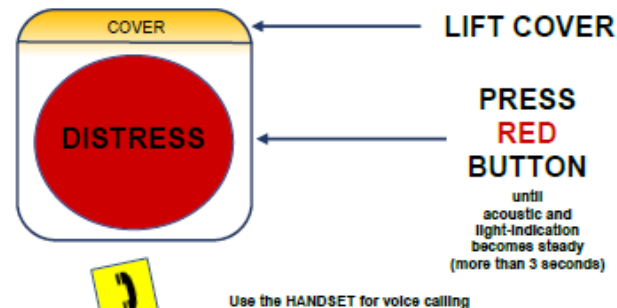
	DSC	Radiotelephony
VHF	Channel 70	Channel 16
MF	2187.5 kHz	2182 kHz
HF4	4207.5 kHz	4125 kHz
HF6	6312.0 kHz	6215 kHz
HF8	8414.5 kHz	8291 kHz
HF12	12577.0 kHz	12290 kHz
HF16	16804.5 kHz	16420 kHz

Remember to use the correct HF-procedures
Don't forget your EPIRB is the secondary means of alerting

С 01.01 2024 ИСКЛЮ ЧЕНЫ

ANNEX

GUIDANCE ON DISTRESS ALERTS



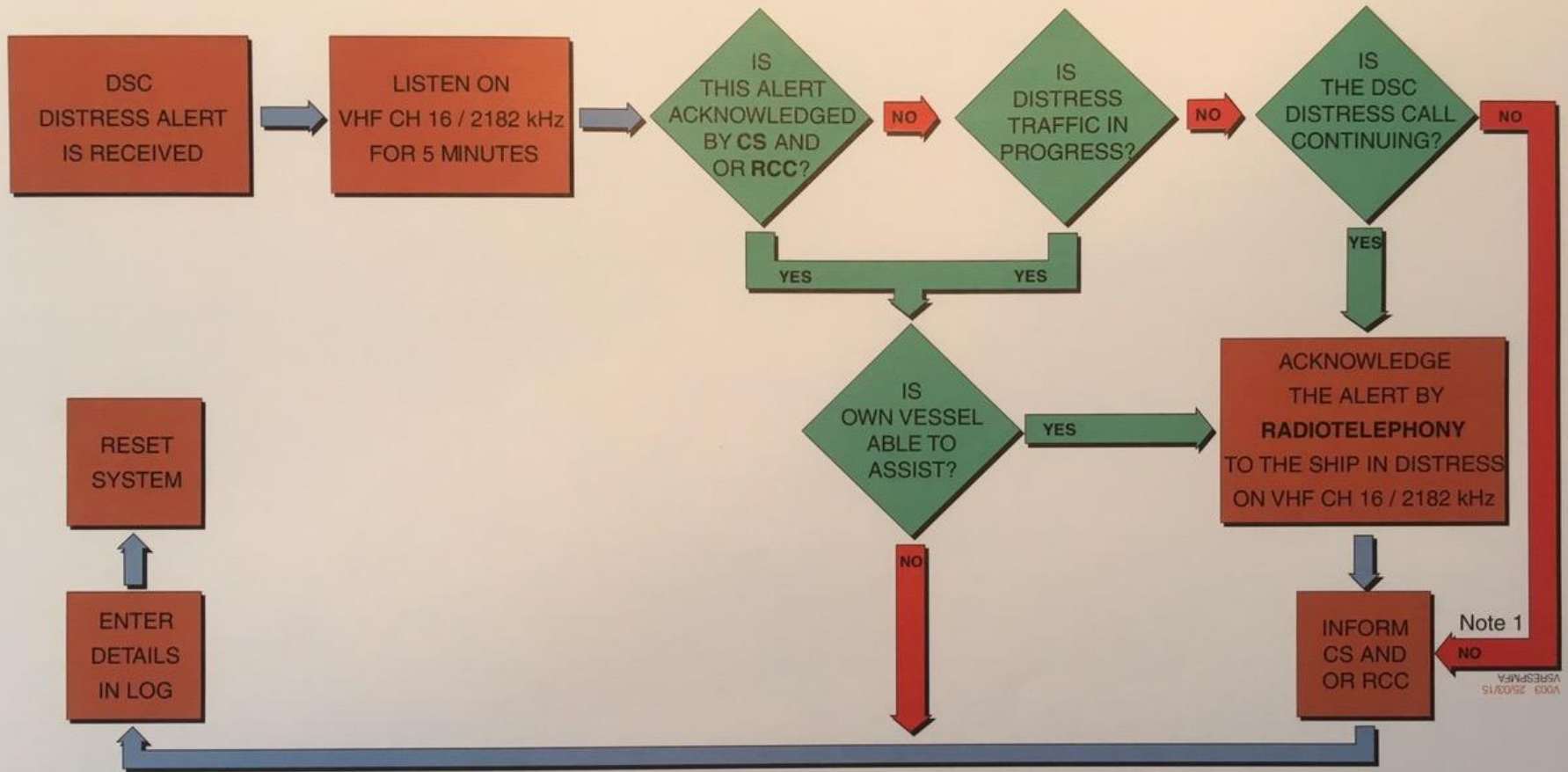
DISTRESS and COMMUNICATION FREQUENCIES

	DSC	Radiotelephony
VHF	Channel 70	Channel 16
MF	2 187.5 kHz	2 182 kHz
HF4	4 207.5 kHz	4 125 kHz
HF6	6 312.0 kHz	6 215 kHz
HF8	8 414.5 kHz	8 291 kHz
HF12	12 577.0 kHz	12 290 kHz
HF16	16 804.5 kHz	16 420 kHz

Remember to use the correct HF procedures.
Do not forget, your EPIRB is the secondary means of alerting

C 01.01 – 2024 г. Заменяется на Flow diagram 1 (MSC. 1 Circ. 1657 28.11-2022)

Figure 10a - Actions by ships upon reception of VHF / MF DSC distress alert



REMARKS:

Note 1: Appropriate or relevant RCC and/or Coast Station shall be informed accordingly. If further DSC alerts are received from the same source and the ship in distress is beyond doubt in the vicinity, a DSC acknowledgement may, after consultation with an RCC or coast station, be sent to terminate the call.

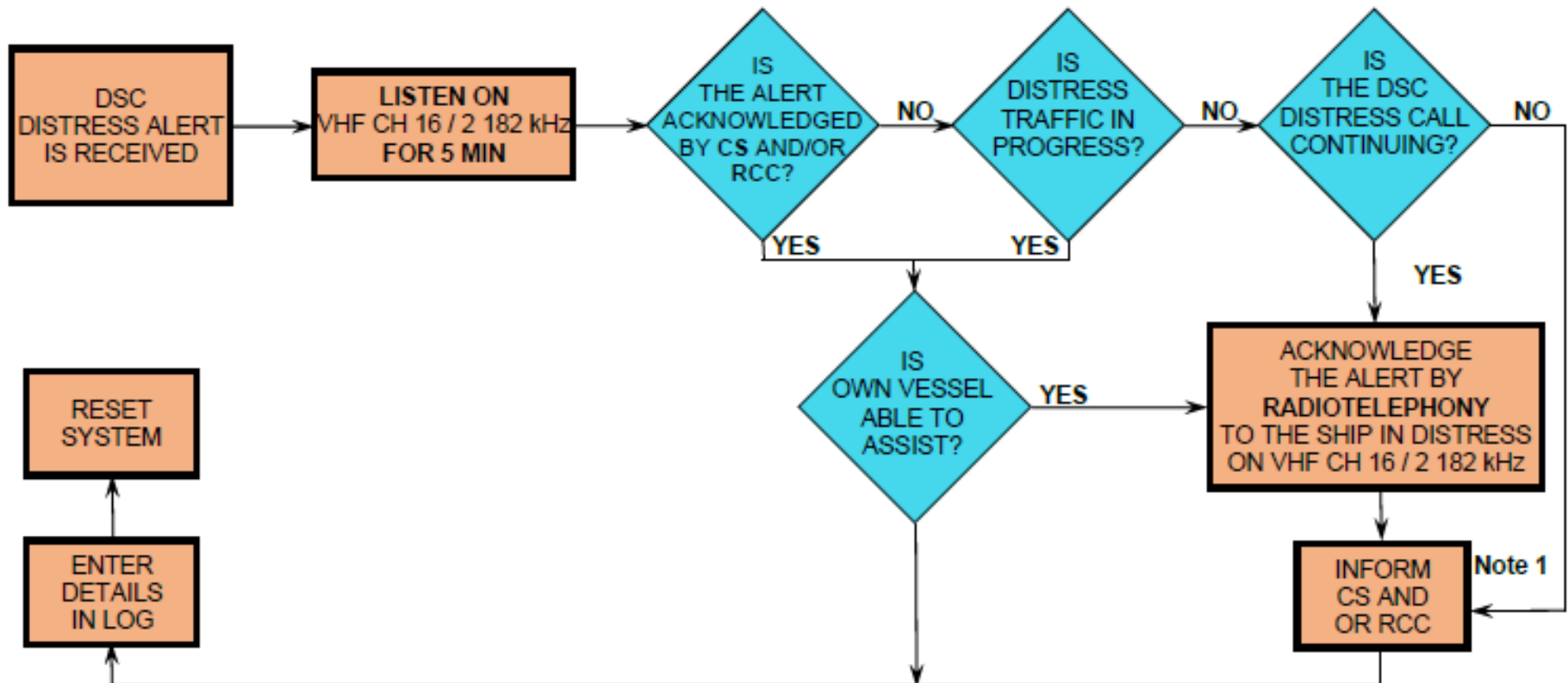
Note 2: In no case is a ship permitted to transmit an all ships DSC **Distress alert relay** on receipt of a DSC distress on either VHF or MF channels. If no aural watch is present on the relative channel (2182 kHz on MF, Ch16 on VHF), the coast station should be contacted by sending an individual DSC distress relay call.

CS = Coast Station

RCC = Rescue Coordination Centre

FLOW DIAGRAM 1

ACTIONS BY SHIPS UPON RECEPTION OF A VHF / MF DSC DISTRESS ALERT



REMARKS:
Note 1: Appropriate or relevant RCC and/or coastal station should be informed accordingly. If further DSC distress alerts are received from the same source and the ship in distress is beyond doubt in the vicinity, a DSC acknowledgement may, after consultation with an RCC or coastal station, be sent to terminate the call.

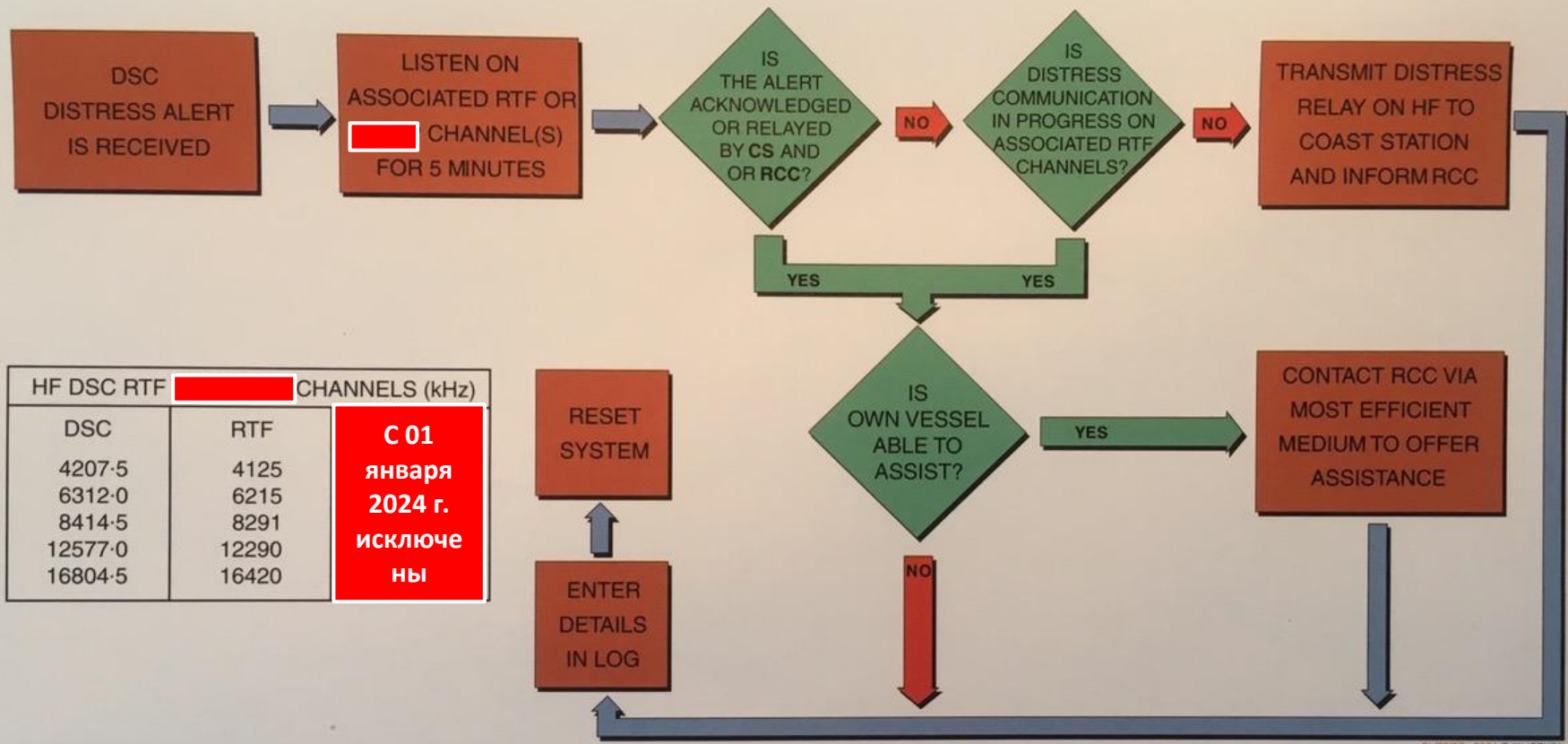
Note 2: In no case is a ship permitted to transmit a DSC distress alert relay on receipt of a DSC distress alert on either VHF channel 70 or MF channel 2 187.5 kHz.

CS = coastal station

RCC = rescue coordination centre

C 01.01 – 2024 г. заменяется на Flow diagram 2 (MSC. 1 Circ. 1657 28.11-2022)

Figure 10b - Actions by ships upon reception of HF DSC distress alert



HF DSC RTF	CHANNELS (kHz)
DSC	RTF
4207.5	4125
6312.0	6215
8414.5	8291
12577.0	12290
16804.5	16420

С 01 января 2024 г. исключены

- Note 1: If it is clear the ship or person in distress are not in the vicinity and/or other craft are better placed to assist, superfluous communications which could interfere with search and rescue activities are to be avoided. Details should be recorded in the appropriate logbook.
- Note 2: The ship should establish communications with the station controlling the distress as directed and render such assistance as required and appropriate.
- Note 3: Distress relay calls should be initiated manually

CS = Coast Station

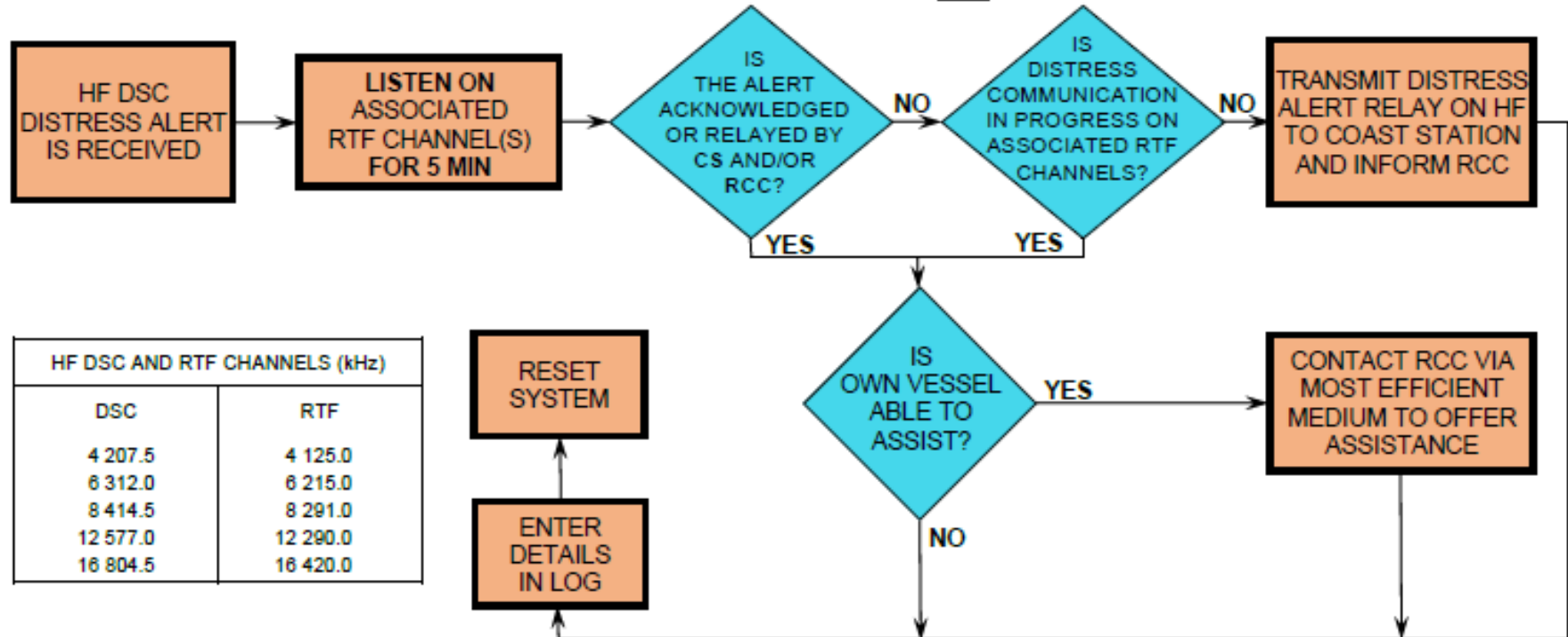
RCC = Rescue Coordination Centre

News

MSC.1/Circ.1657
Annex, page 4

FLOW DIAGRAM 2

ACTIONS BY SHIPS UPON RECEPTION OF A HF DSC DISTRESS ALERT



HF DSC AND RTF CHANNELS (kHz)	
DSC	RTF
4 207.5	4 125.0
6 312.0	6 215.0
8 414.5	8 291.0
12 577.0	12 290.0
16 804.5	16 420.0

REMARKS:

NOTE 1: If it is clear the ship or persons in distress are not in the vicinity and/or other crafts are better placed to assist, superfluous communications which could interfere with search and rescue activities are to be avoided. Details should be recorded in the appropriate logbook.

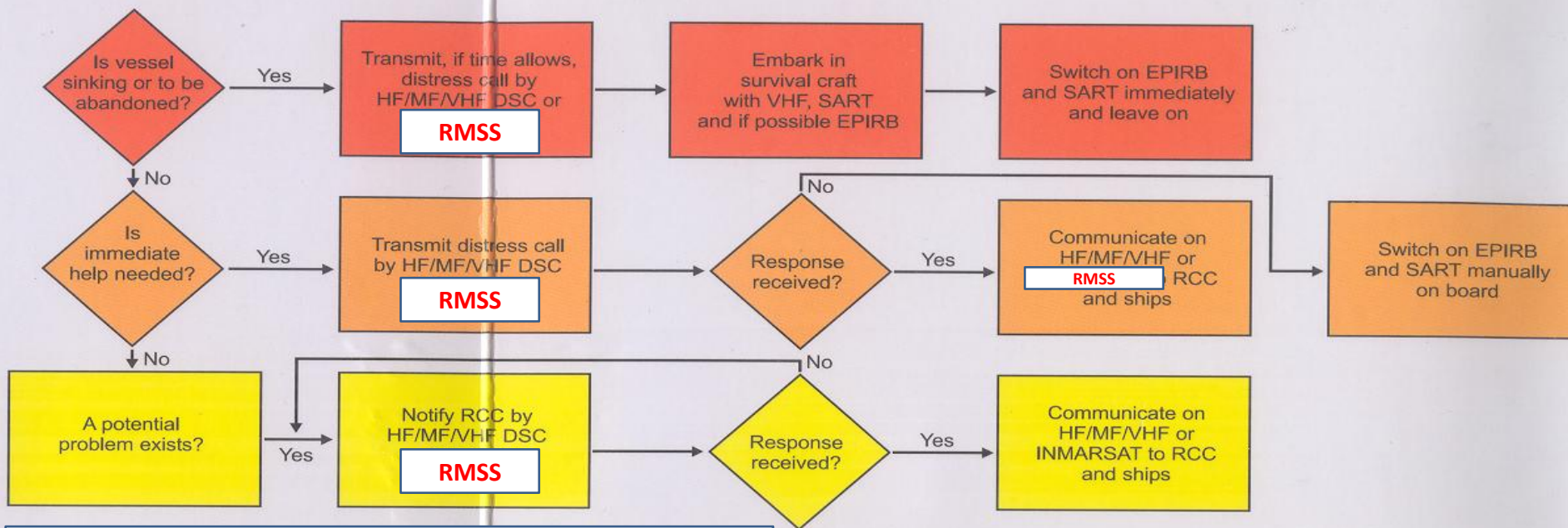
NOTE 2: The ship should establish communications with the station controlling the distress as directed and render such assistance as required and appropriate.

NOTE 3: Distress alert relays should be initiated manually.

CS = coastal station

RCC = rescue coordination centre

GMDSS OPERATING GUIDANCE FOR SHIPS IN DISTRESS SITUATIONS



RMSS - Recognized Mobile Satellite Service

1. EPIRB should float free and activate automatically if it cannot be taken into survival craft.
2. Where necessary, ships should use any appropriate means to alert other ships.
3. Nothing above is intended to preclude the use of any and all available means of distress alerting.

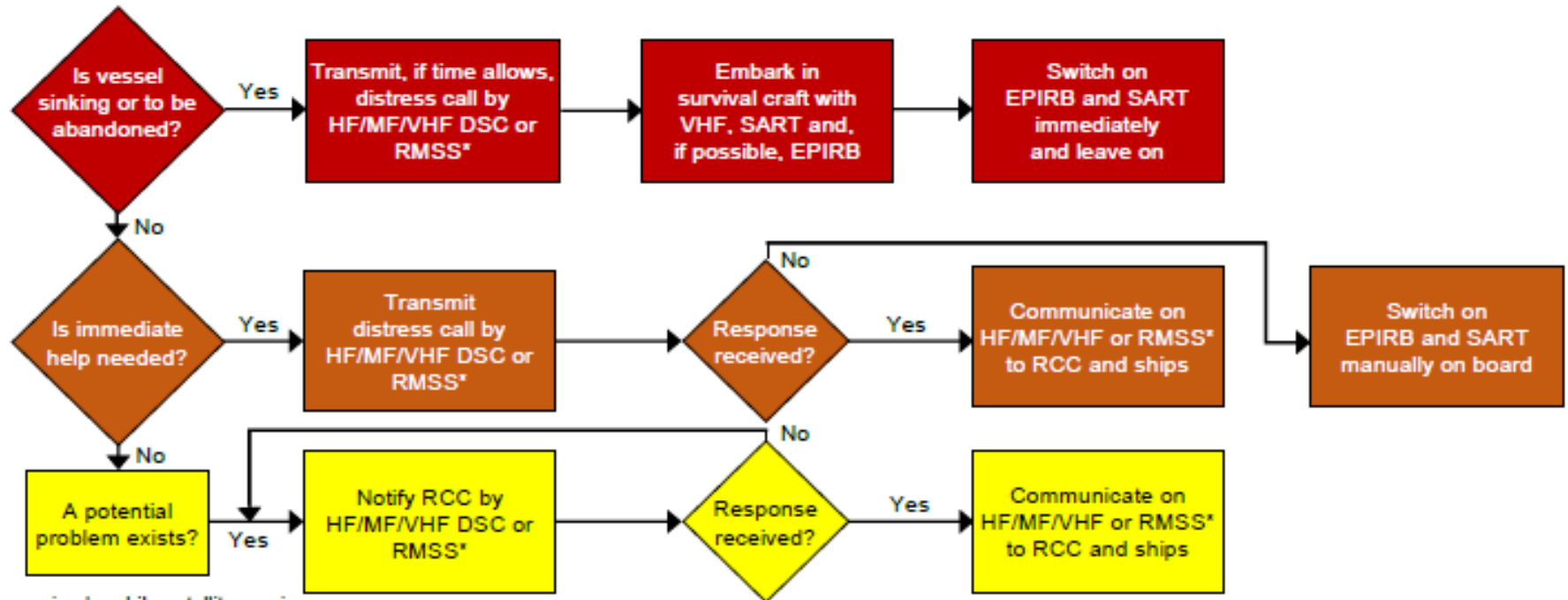
RADIO DISTRESS COMMUNICATIONS

	Digital selective calling (DSC)	Radiotelephone	Radiotelex
VHF	Channel 70	Channel 16	
MF	2187.5 kHz	2182 kHz	
HF4	4207.5 kHz	4125 kHz	
HF6	6312 kHz	6215 kHz	
HF8	8414.5 kHz	8291 kHz	
HF12	12577 kHz	12290 kHz	
HF16	16804.5 kHz	16420 kHz	

С 1 января 2024 г. ИСКЛЮЧАЮТСЯ

ANNEX

GMDSS OPERATING GUIDANCE FOR SHIPS IN DISTRESS SITUATIONS



* Recognized mobile satellite service

1. EPIRB should float free and activate automatically if it cannot be taken into survival craft.
2. Where necessary, ships should use any appropriate means to alert other ships.
3. Nothing above is intended to preclude the use of any and all available means of distress alerting, including those listed in COLREG 72, annex IV.

Frequencies for Distress Communications		
	Digital selective calling (DSC)	Radiotelephone
VHF	Channel 70	Channel 16
MF	2 187.5 kHz	2 182 kHz
HF4	4 207.5 kHz	4 125 kHz
HF6	6 312.0 kHz	6 215 kHz
HF8	8 414.5 kHz	8 291 kHz
HF12	12 577.0 kHz	12 290 kHz
HF16	16 804.5 kHz	16 420 kHz



The end